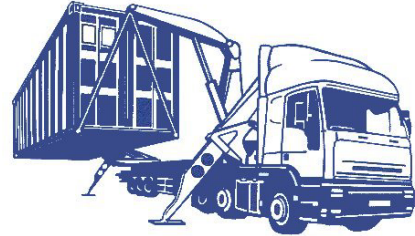


Containerlift



Container Movement Solutions

Operational Acknowledgement & Indemnity

To: Containerlift Services Ltd, PO Box 582, Great Dunmow, Essex, CM6 3QX

Site Company:
Site Address:

Customer:
Customer Address:

To be completed by the Site Contact

We acknowledge that we have read and understood the operational requirements of the Containerlift equipment. Detailed information has been made available to us and all questions have been fully addressed by Containerlift.

We fully indemnify Containerlift against all and any costs arising from the need to recover their vehicle from the above site to the nearest public road. We fully indemnify them against all and any costs arising from damage to their vehicle and/or any property onsite resulting from their vehicle entering and operating onsite. We confirm that any container for collection by Containerlift will be in a suitable position for lifting by a Containerlift vehicle.

Declaration and acknowledgement for the Site and on behalf of the customer:

I,.....(full name of Signatory)

The undersigned, declare that I am authorised by the above named Site & Customer to make this undertaking.

Signed:..... Date:.....

Detailed operational information is available online at www.containerlift.com

FAX TO CONTAINERLIFT ON: 0800 174547

Containerlift Services Ltd

PO Box 582, Great Dunmow
Essex, CM6 3QX
England
All trading to Containerlift terms & Conditions

tel: +44 1371 879400
fax: +44 1371 879444
e-mail: enquiries@containerlift.co.uk
website: <http://www.containerlift.co.uk>



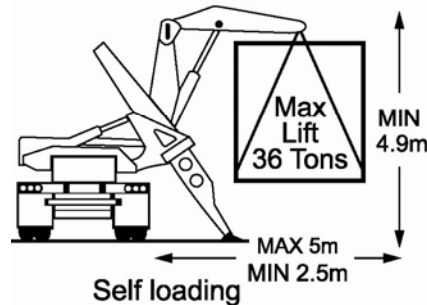
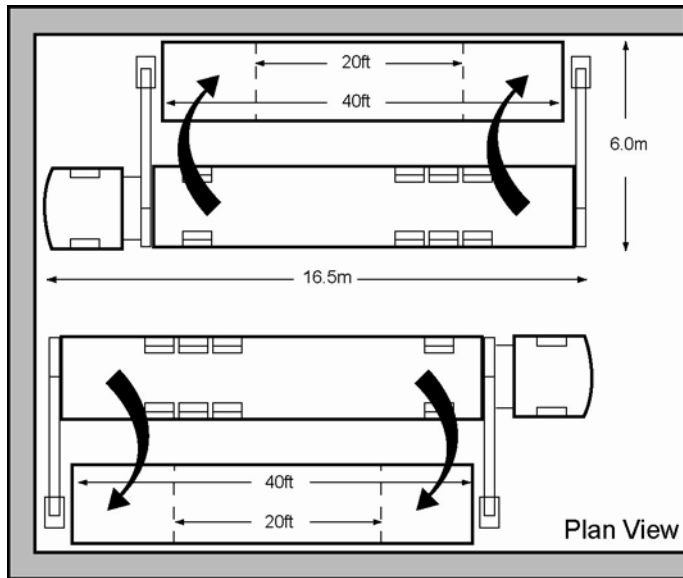
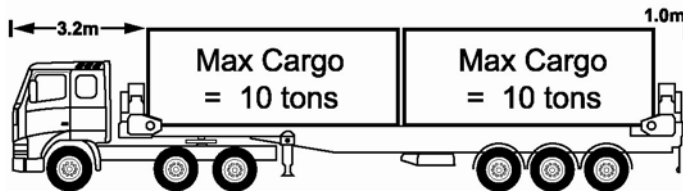
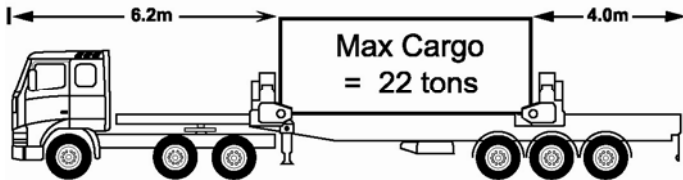
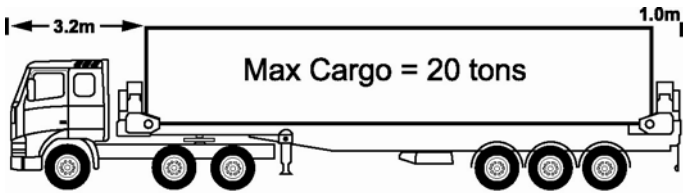
ISOLOADER



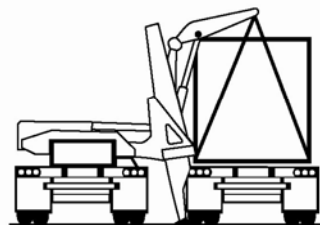
COMMERCIAL MOTOR
TRAILER OF THE YEAR
2003
SPECIAL PURPOSE

Containerlift Operational Information

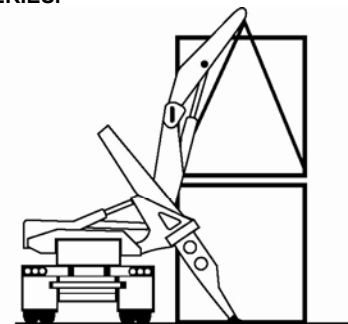
If you have any queries regarding the operation of our equipment, please do not hesitate to contact our office below.



Self loading



Loading Vehicles or Rail Wagons



Double Stacking

- Containerlift vehicles have a crane at each end.
- They lift by attaching chains to the bottom container corners castings.
- Maximum lifting capacity is 36 tonnes.
- Maximum site carrying capacity is 36 tonnes.
- Maximum ground pressure loading is 1.3 MPa.
- Maximum weight for double stacking is 18 tonnes gross (lower container maximum height is 8'6")
- **Maximum gross road-carrying capacity is 21 tonnes – this includes the weight of the container** (a 20ft container weighs approximately 2 tonnes & a 40ft approximately 4 tonnes).
- Maximum weights shown are approximates and are for road carried cargo only.
- Heavier weights can be carried on the road if:
 1. Container is going part of its journey by rail.
 2. Container is lifted onto a standard vehicle.

Please discuss details with us before placing your order.

- All operational information is available at www.containerlift.co.uk
- Containerlift vehicles only lift off to the driver's side.
- Containerlift vehicles are *not* all-terrain – if we get stuck you get charged!
- Containers can only be placed alongside vehicle on the driver's side.
- Containers cannot be lifted on a steep slope.
- Containers cannot be lifted on a steep camber.
- Always allow room (as per diagram).
- If in doubt, please ask – or fax us a site plan (with dimensions).
- Remember to specify which end of the vehicle you want the doors. Unless specified otherwise doors will be delivered to the rear.
- Empty 'storage only' containers can be placed differently using a mobile crane or a vehicle with a single crane.
- A Containerlift vehicle may not be able to reach a container if:
 1. It was delivered by a different type of vehicle or crane.
 2. It has been moved since being delivered.
- If in doubt please ask – so you order the right equipment
- **WE CHARGE FOR FAILED COLLECTIONS OR DELIVERIES.**